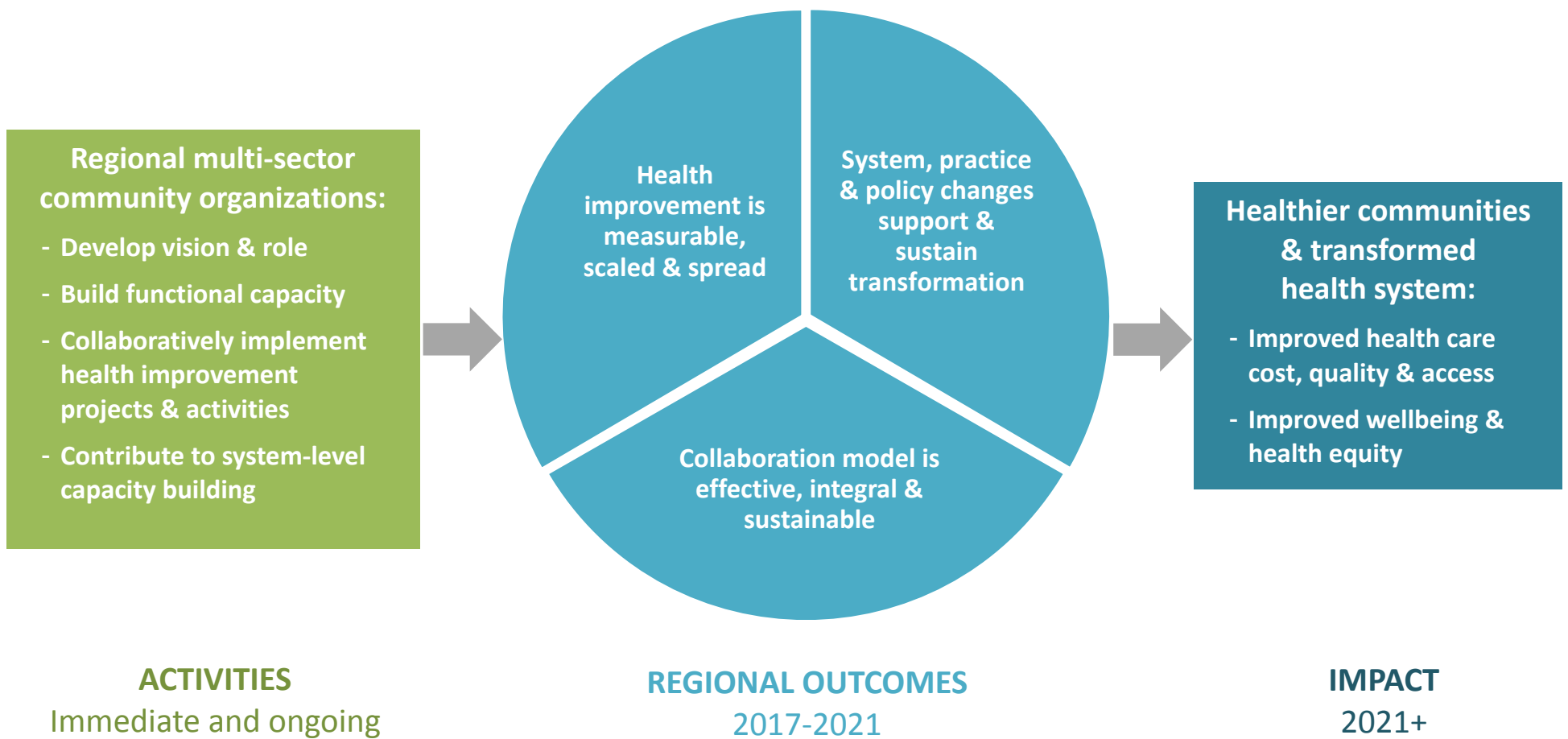
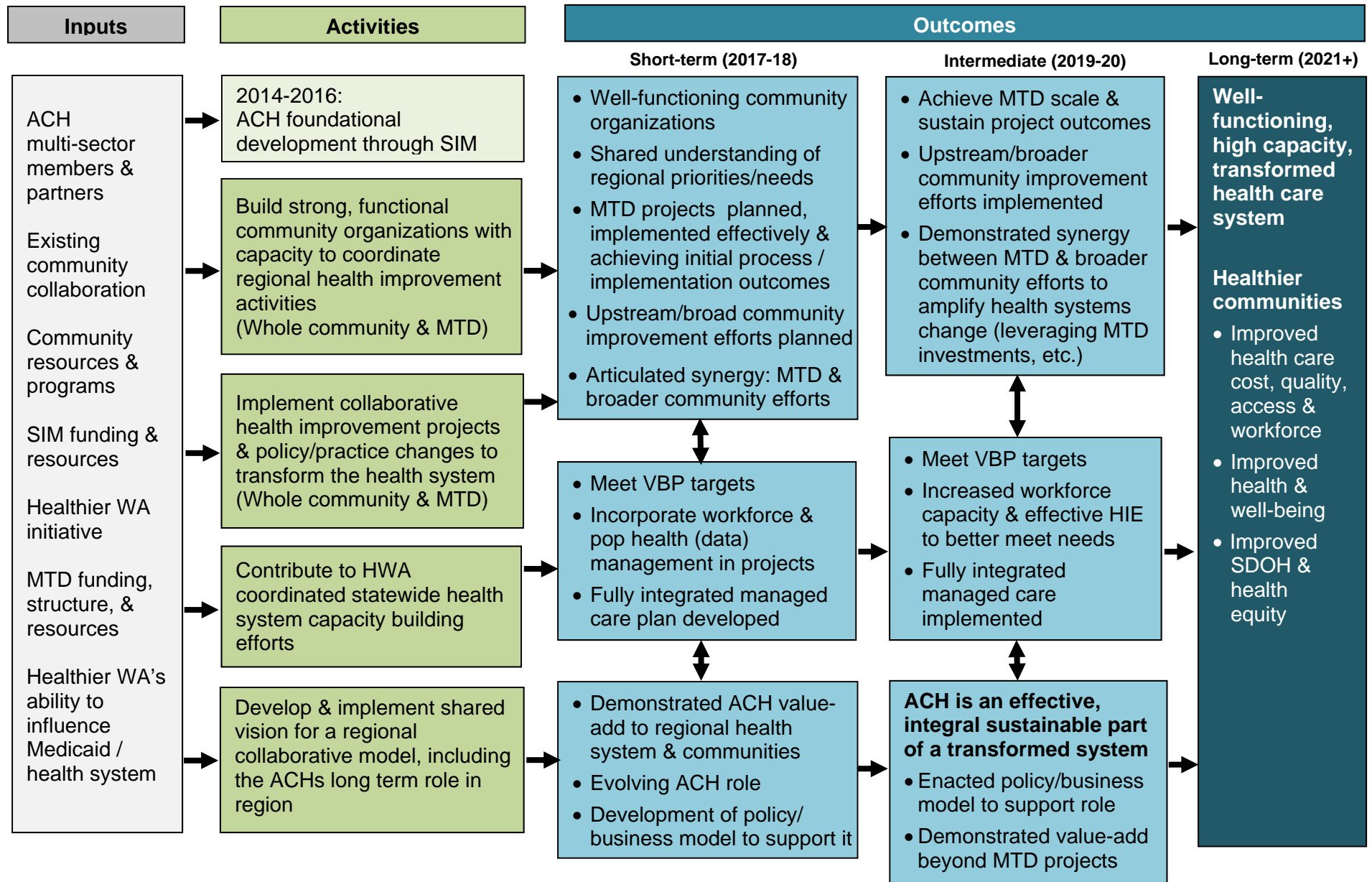


# Accountable Communities of Health | Conceptual Model



# Accountable Communities of Health | Logic Model



# NORTH SOUND ACH COMPONENTS OF CHANGE



# NORTH SOUND ACH DOMAIN 1 & PROJECT AREAS: PLANNING PHASE ALIGNMENT



## Value-Based Payment

- VBP practice readiness assessment
- Preparing for Fully Integrated Managed Care
- Preparing for Dental Managed Care, i.e. ICD-10 coding in oral health
- Readiness for value-based payments for Care Coordination
- Regional VBP Transition Plan alignment with Project Area Implementation Plans
- MVP Action Team participation and information sharing

## Workforce Development

- Trainings for Community-based care coordinators, Transitions Coaches, Chemical Dependency Professionals, others as identified
- Cultural competency and health literacy trainings
- Workforce gap analysis with regional partners
- Project Implementation Plans include workforce strategies
- Explore telehealth readiness and current state
- Dental Health Aide Therapists (DHAT) workforce pilot with Tribal partners

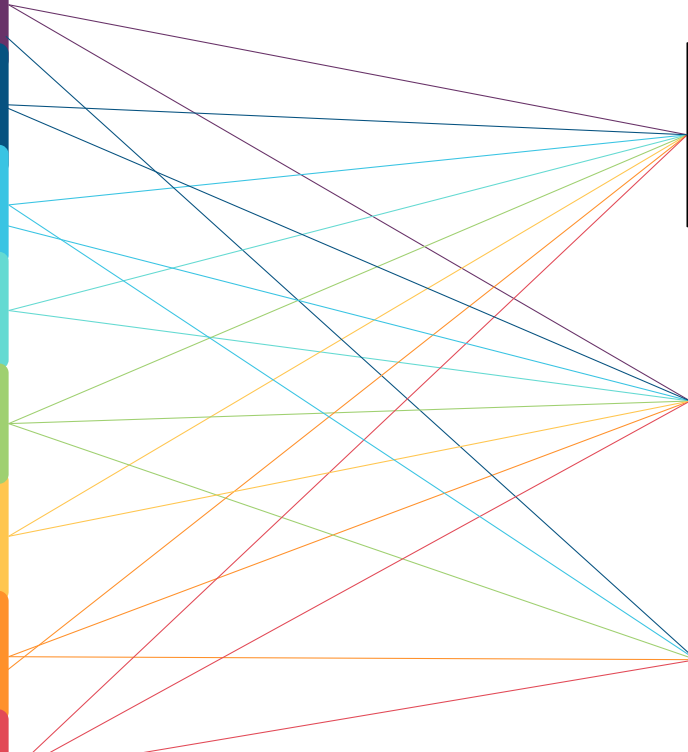
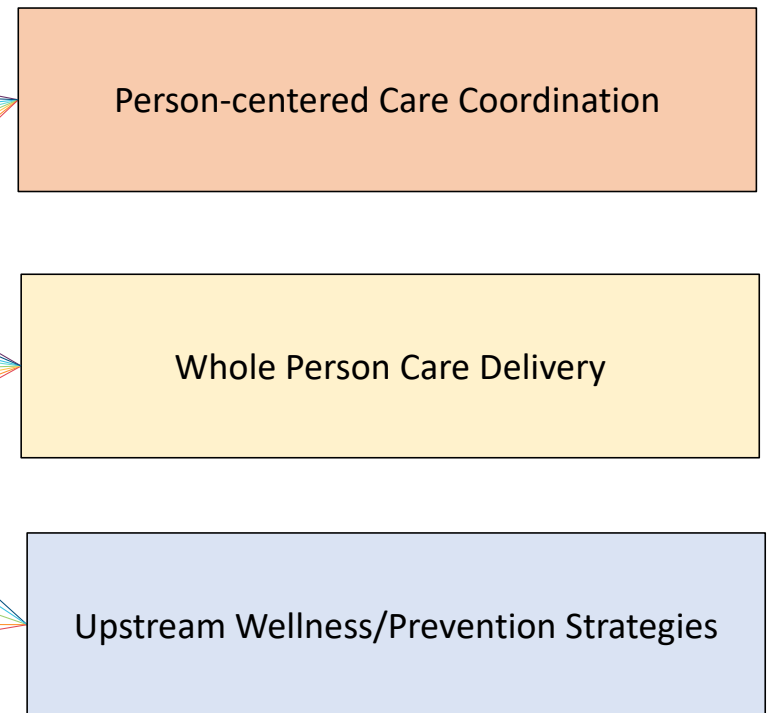
## Population Health Management

- Assess provider EHR use and HIE readiness expansion, i.e. PreManage
- Explore state HIE/HIT current use and increase regional adoption, i.e. PMP, WAIS, EDIE
- Preparing for Registry implementation
- Adopt usage of ICD-10 codes in dental care
- Project Implementation Plans include population health management strategies

## PERFORMANCE OUTCOME CATEGORIES



## PROJECT STRATEGY AREAS



North Sound ACH Thinking on Initiatives in November 2017: Project Plan

## **North Sound ACH Project Framework**

### **General**

---

- The project is transformational and aims to accomplish something new, different, better, or more expansive than current efforts
- The project is not duplicative of other work in the region (prefer complementary, additive, or expand on other work)
- The project has engaged multiple provider partners

### **Evidence**

---

- The project uses an evidence-based model recommended in the Toolkit

### **Data**

---

- The project addresses the metrics required by the Toolkit
- The project addresses a regional health need, as supported by data

### **Population**

---

- The project is relevant to Medicaid, with potential to improve health outcomes for Medicaid enrollees
- The project targets the population required by the Medicaid Transformation Project Toolkit

### **Impact**

---

- The project has potential to increase access to health care and other services
- The project considers social determinants of health
- The project does not protect obsolete models, but does not break models that are working without an adequate improved model
- The project improves population health through clinical management and addressing underlying determinants of health status
- The project has the potential to significantly impact health outcomes and/or reduce inequities

### **Infrastructure**

---

- The project uses a workforce that is currently available and/or increases capacity of available workforce
- The project builds on, or leverages existing infrastructure and supports local efforts for transformation

### **Project Planning**

---

- The project has a plan for sustainability beyond the transformation project years
- The project has the potential to be scaled up and expanded
- The project has incorporated stakeholder and public input, and has a plan for continued engagement
- The project is feasible to implement, including potential cost impacts
- The project can be flexible, and may be implemented in diverse areas, or with diverse populations
- The project has the potential to address an area of critical need in the region, or an area with high acuity